

 **Vepalabs**  
VETERINARY PATHOLOGY  
PRODUCT CATALOGUE

2024/2025



## CONTACT DETAILS

MAIN NUMBER 1300 VEPA LAB (837 252)

### PERSONNEL

**Amber Kleesh**

Logistics Officer

[amber.kleesh@vepalabs.com.au](mailto:amber.kleesh@vepalabs.com.au)

**Denzie White**

Technical Support Officer

[denzie.white@vepalabs.com.au](mailto:denzie.white@vepalabs.com.au)

**Emily Lowe**

Customer Relations Manager

[emily.lowe@vepalabs.com.au](mailto:emily.lowe@vepalabs.com.au)

**Erin Hooper**

Technical Support Officer

[erin.hooper@vepalabs.com.au](mailto:erin.hooper@vepalabs.com.au)

**Harry Allan**

Technical Support Officer

[harry.allan@vepalabs.com.au](mailto:harry.allan@vepalabs.com.au)

**Jack Mainprize**

Business Manager

[jack.mainprize@vepalabs.com.au](mailto:jack.mainprize@vepalabs.com.au)

**Jessica Shu**

Administration | Reporting

[jessica.shu@vepalabs.com.au](mailto:jessica.shu@vepalabs.com.au)

**Rachel Bailey**

Technical Support Officer

[rachel.bailey@vepalabs.com.au](mailto:rachel.bailey@vepalabs.com.au)

**Peter Hay**

Quality Manager | Technical Support

[peter.hay@vepalabs.com.au](mailto:peter.hay@vepalabs.com.au)

**Peter Tshaikiwsky**

Service Engineer | Technical Support

[peter.tshaikiwsky@vepalabs.com.au](mailto:peter.tshaikiwsky@vepalabs.com.au)

**Steph Silva**

Technical Support Officer

[stephanie.silva@vepalabs.com.au](mailto:stephanie.silva@vepalabs.com.au)

### EMAIL AND WEB

**Emailed orders**

[orders@vepalabs.com.au](mailto:orders@vepalabs.com.au)

**Main Website**

[www.vepalabs.com.au](http://www.vepalabs.com.au)

**Online orders**

[vepalabs.dearportal.com](http://vepalabs.dearportal.com)

**POC results website**

[poc.vepalabs.com.au](http://poc.vepalabs.com.au)



## ABOUT US

---

### *Best in class point of care diagnostics for Australian vets*

From the most cost effective chemistry and electrolyte testing on the market, to the latest generation haematology and blood gas analysers.

Vepalabs can help you grow your practice offering a faster, more comprehensive service to your clients, while saving you thousands in laboratory testing fees.

Providing 24/7 service to Australian vets with a no nonsense, down to earth approach, where you get to talk to a real person.

Over 700 Australian Veterinary practices are already benefiting from reduced testing costs.

Your practice can too.



Vepalabs supplies and supports a wide range of best in class Veterinary diagnostic products for point of care testing.

Our range includes chemistry, electrolyte, haematology and blood gas units, as well as the Veterinary specific G-Pet Glucometer and more.

### **24/7 SUPPORT, 365 DAYS A YEAR**

We pride ourselves on offering Australian veterinary practices a "boutique" personalised service that includes 24/7 support (from a real person at the other end of the phone), 365 days a year.

### **BEST SERVICE, LOWEST COST**

We are more than just an "agent" for our products. Vepalabs is a licensed, certified partner of the manufacturers. Our trained technicians undertake most servicing and maintenance here in Australia. This allows us to offer an un-matched extended service program that goes beyond the usual warranty cover. This manufacturer partnership also enables us to bring Australian veterinarians some of the lowest testing costs, not just in Australia, but the world.

### **COMPREHENSIVE TRAINING & SUPPORT**

We offer on-site training, refresher training and all the support your staff need in running their point of care equipment. We have a ZERO FEE training policy. We will train your team until they are 100% confident in the use of the equipment, including re-visits and all the phone support you need. FREE.

Call us now for a no no nonsense, no obligation quote and a business case built around YOUR practice and situation.

# CONTENTS

## CHEMISTRIES

SKYLA CHEMISTRIES	5-7
G-PET PLUS+	8
L-PET PLUS+	9

## HAEMATOLOGY

SKYLA HAEMATOLOGY	10
INSIGHT HCT METER	11

## ELECTROLYTES

EAGLENOS P1	12
I-SMART 30 VET	13

## COAGULATION

QUICKVET	14
INSIGHT QLABS	15

## BLOOD GAS

EPOC	16
------	----

## SPECIALTY

VCHECK V200	17
INSIGHT URINALYSIS	18

## EQUIPMENT

TD400-R CENTRIFUGE	19
V-5000 LED MICROSCOPE	20

## BENCHTOP TESTS

ANIGEN TESTS	21
--------------	----

## BLOOD TUBES

All major types of blood tubes	22
--------------------------------	----



# SKYLA VB1

## CHEMISTRY ANALYSER

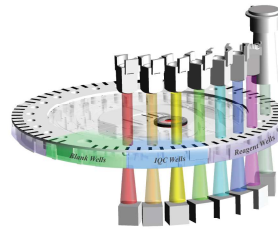
The skyla VB1 clinical chemistry analyser is a compact system designed to perform blood chemistry test - fast, reliably.

Its easy-to-use and simple operation requires no specialised training and enables you to obtain results in about 15 minutes with the precision and accuracy equivalent to those of an external laboratory analyser.

The Skyla VB1 is the only analyser of its kind that allows you to run single tests as well as full rotors bringing you much more economical testing options.

### FEATURES

- Fast and reliable clinical chemistry analysis
- Compact bench top unit
- 200µl sample volume
- Can use whole blood, serum or plasma
- Species specific reference ranges
- Stores up to 50,000 test results
- Built-in printer
- **5 year warranty**
- Large LCD touch screen
- Almost no maintenance required
- Single parameter testing



**Run 20 panels a month and the VB1 is yours, FREE!**



# SKYLA SOLUTION

## CHEMISTRY ANALYSER



### MULTI PATIENT CHEMISTRY ANALYSER

The Skyla Solution is Australia's only multi-patient dry rotor analyser. All the advantages of its little brother, the VB1, with the ability to test three patients at once.

### Intelligent Interference Eliminating (iiE) System

Use multiple wavelengths LEDs and big data to eliminate the effect of sample lipemia (LIP), hemolysis (HEM) and icterus (ICT) interference and provide high accuracy results.

### User friendly navigation

A colour touch screen and easy to follow step by step instructions means your clinical team can spend less time preparing and loading samples and more time with your patients and clients! Its easy-to-use and simple operation requires no specialised training and enables you to obtain results in minutes with the precision and accuracy of an external laboratory analyser.

**Run 40 panels a month and the Solution is yours, FREE!**

### FEATURES

- Multi Patient
- Fast and reliable clinical chemistry analysis
- Compact, bench-top unit
- 200µl sample volume
- Can use whole blood, serum or plasma
- Species-specific reference ranges
- Stores up to 50,000 test results
- Built-in printer
- **5 year warranty**
- Large LCD touch screen
- Almost no maintenance required



# SKYLA VB1 & SOLUTION

## TEST MENU

Items	7+3 Preanesthetic Panel 900-100	9+3 Rural Panel 900-110	13+3 Diagnosis Panel 900-120	13+4 Diagnosis Plus Panel 900-140	14+4 Equine Panel 900-150	2 Thyroid/T4 Panel 900-160	14+3 Large Animal Panel 900-170	10+2 Liver Plus Panel 900-180	12+3 Avian & Reptile Panel 900-190	4+2 Diabetes Panel * 900-300	4+2 Electrolytes Panel 900-310	14+3 Diagnosis-II Panel 900-320	14+5 Critical Care Panel 900-330	Items
ALP	●		●	●	●		●	●				●	●	ALP
ALT	●		●	●	●			●				●	●	ALT
AST			●		●		●	●	●					AST
BUN	●	●	●	●	●		●	●				●	●	BUN
CREA	●	●	●	●	●							●	●	CREA
GLU	●		●	●	●		●	●	●	●		●	●	GLU
TP	●		●	●	●		●	●	●	●		●	●	TP
ALB	●	●	●	●	●		●	●	●	●		●	●	ALB
TBIL			●	●	●			●				●	●	TBIL
AMY			●	●								●	●	AMY
LIPA												●	●	LIPA
PHOS		●	●	●	●		●	●	●			●	●	PHOS
Ca		●	●	●	●		●	●	●			●	●	Ca
Na		●		●	●		●	●	●			●	●	Na
K		●		●	●		●	●	●			●	●	K
Cl		●		●	●		●	●	●			●	●	Cl
GGT					●		●	●				●	●	GGT
CPK					●		●	●	●			●	●	CPK
CHOL			●		●	●	●	●				●	●	CHOL
IC02		●			●							●	●	IC02
BA					●			●	●					BA
Mg							●		●					Mg
UA									●					UA
LAC													●	LAC
T4						●								T4
FRU*										●				FRU*
GLOB #	●		●	●	●		●	●	●	●		●	●	GLOB #
AG #	●		●	●	●		●	●	●	●		●	●	AG #
B/C #	●	●	●	●	●							●	●	B/C #
Agap #		●		●	●							●	●	Agap #
Na/K #		●			●				●				●	Na/K #

Single assay tests

BUN, CREA, Cl, TBIL, AMY, LDH

Dual assay tests

Na+K, Ca+PHOS, AST+CPK, ALB+TP, ALP+ALT, TRIG+CHOL

CHEMISTRIES



# G-PET PLUS+

## VETERINARY GLUCOMETER



### G-Pet Plus makes testing quick, easy and economical

The G-Pet Plus is a species specific veterinary glucometer. G-Pet Plus is easy to use and economical meaning that it's suitable for use by veterinarians as well as owners of diabetic pets who have undergone a brief period of training from their vets.

As a handheld device, it can be used in practice, in the field or at home as a portable meter of blood glucose levels in cats, dogs and horses.

The G-Pet Plus glucose veterinary monitoring system features:

- Biosensor auto code technology
- 1.5µl blood sample
- 4 reminder alarms for worry free testing
- 8 second countdown
- 300 result memory with date and time
- Accurate results
- Big LCD screen
- Hypoglycaemic and hyperglycaemic indicator alarms
- PC download option



### Testing made easy with just 3 steps



Step 1: Insert the test strip (meter will turn on)



Step 2: Apply blood



Step 3: Results in 10 seconds

## L-PET PLUS+

### VETERINARY LACTATE METER

The L-Pet Plus Lactate meter is an easy to use, handheld lactate meter. Using the latest technology L-Pet Plus electrochemical test strips the L-Pet Plus will give you reliable lactate measurements anywhere, anytime, in just 45 seconds!

#### Features

- Results in 45 seconds
- Easy to use
- Portable
- Minimum sample size 0.3µl
- Capillary, venous or arterial whole blood
- Stores 300 patient results
- Adjusts result for HCT
- No user calibration
- Eliminates interfering substances

#### Lactate Measurement Range

- 0.7 - 22.2 mmol/L
- 6 - 200 mg/dL

#### Sample types

- Whole blood: Capillary, Arterial, Venous



# SKYLA HAEMATOTOLOGY

## SH50 HAEMATOTOLOGY ANALYSER



SH50 is a compact 5-part haematology analyser equipped with new and improved specific parameters, which is more suitable for small vet hospitals, vet clinics and is useful to veterinarians not only for diagnostic information, but also providing invaluable prognostic value for their patients.

### More comprehensive parameters

**Reticulocyte** for the evaluation of anemia types - RET%, RET\_ABS, IRF

**NRBC** for the evaluation of regenerative anemia or splenic disease

**LIC, ALY** for the evaluation of stress, infection or neoplastic disorders

### Accurate, Pure Laser Technology

- Advanced precision laser-based flow cytometry
- original cell morphology can be precisely measured in seconds
- free chemical dye, lower the cost

### Rapid Test Time

CBC+5 DIFF results can be available within 60s

### 34 Whole Blood Parameters

Red blood cell (13 items)

RBC, HGB, HCT, MCV, RBC, PLT, MCH, MCHC, RDW\_CV, RDW\_SD, RET%, RET\_ABS, IRF, NRBC#, NRBC%

### White blood cell (15 items)

WBC, LYM#, LYM%, MON#, MON%, NEU#, NEU%, EOS#, EOS%, BASO#, BASO%, ALY#, ALY%, LIC#, LIC%

### Platelet (6 items)

PLT, MPV, PDW, PCT, P-LCC, P-LCR

### Histogram

RBC  
PLT

### Scattergram

WBC Diff  
Reticulocyte

### Micro Sample Requirement

Only 20µl whole blood are needed to run a full, 5-part CBC differential

### Easy to Operate and Maintain

Big Touch Screen, Multi-Language, One-Key Maintenance



# INSIGHT HCT METER

## HAEMATOCRIT HCT AND TOTAL HAEMOGLOBIN

The Insight HCT meter is a low cost handheld meter for the measurement of canine and feline haematocrit and total haemoglobin in capillary and venous whole blood.

The Insight HCT meter utilises optical reflectance for determination of haematocrit (HCT) and total haemoglobin. The appropriate species chip (cat or dog) and test strip are inserted into the meter and a drop of whole blood is applied to the test strip. The meter displays haematocrit (HCT) and total haemoglobin results in just 30 seconds, reporting HCT as a percentage (%).

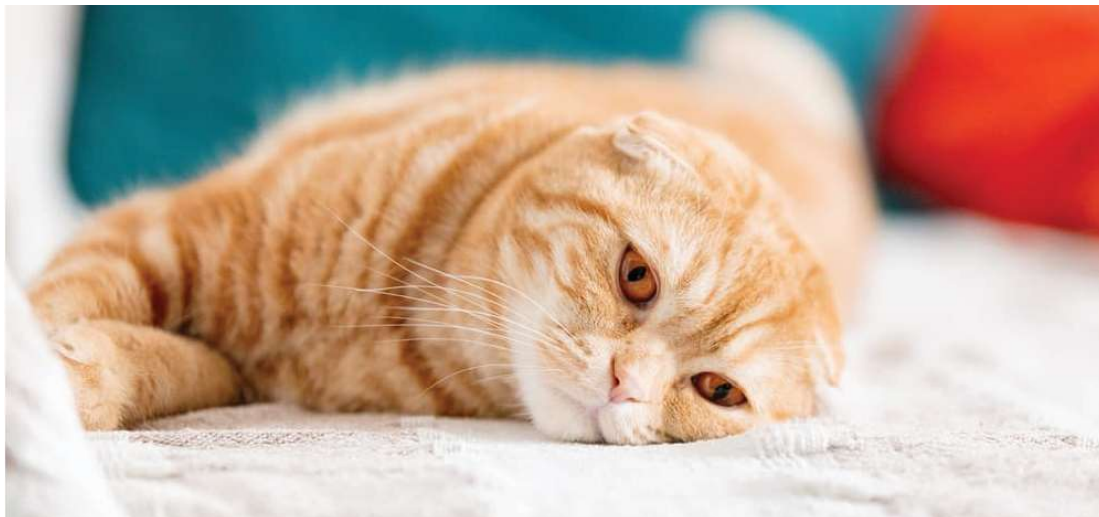
### Features

- Calibrated for cats and dogs
- Accurate and precise
- Handheld 30 second test time
- One drop whole blood (Venous, Capillary or EDTA)
- Stores 250 results
- HCT results reported as %
- Room temperature strip storage
- Large LCD Screen



# EAGLENOS P1

## ELECTROLYTE ANALYSER



The Eaglenos P1 is an easy to use, maintenance free, portable analyser providing fast accurate results within 5 minutes.

The Eaglenos P1 is a light, compact analyser making it convenient for smaller veterinary clinics with limited space.

### Electrolyte Cartridge

- "5 in 1" cartridge: Concurrently tests 5 parameters: Potassium (K<sup>+</sup>), sodium (Na<sup>+</sup>), chloride (Cl<sup>-</sup>), Ionized calcium (iCa<sup>2+</sup>) and Ionized magnesium (iMg<sup>2+</sup>), addressing more comprehensive clinical needs
- Gold standard ISE electrolyte analysis
- No risk of sample contamination: Dry chemistry method, single-use cartridge eliminates the risk of contamination
- Maintenance free: No fluid pipe inside the device and no reagent pack required
- Auto calibration before each test

### How to Use



Step 1: Scan the barcode on the cartridge pouch and take out the cartridge from its pouch



Step 2: Fill the inlet with sample to the fill mark and slide the cap to seal the inlet



Step 3: Insert the cartridge into the analyser until it clicks. Wait for the results

**Run 25 tests a month and the Eaglenos P1 is yours, FREE!**



## I-SMART 30 VET ELECTROLYTE ANALYSER

The i-Smart 30 Vet is a maintenance free, portable electrolyte analyser. It performs accurate electrolyte analysis quickly and displays results within 35 seconds. It has an "all-in-one" cartridge containing all consumables required for the tests including reagents, electrodes and sample probe.

The i-Smart 30 Vet Electrolyte Analyser is a state of the art electrolyte analyser with a modern design, large LCD touch screen and an in-built printer. Electrolyte results can be instantly viewed and printed.

### Fast & Accurate

- Gold standard ISE electrolyte analysis
- Tests electrolytes Na<sup>+</sup>, K<sup>+</sup>, Cl<sup>-</sup> and Ca<sup>++</sup>
- Whole blood, serum or plasma 60ul sample volume
- Results in 35 seconds
- Specific animal species reference ranges

**Run 30 tests a month and the i-Smart is yours, FREE!**

### All-in-One Cartridge

- No user maintenance
- Auto-calibration
- Cartridge contains electrodes and all consumables

### Features

- 300,000 test data storage
- Large touch screen LCD
- Veterinary specific software
- Battery or mains powered



# THE QUICKVET ANALYSER

## COAGULATION, FIBRINOGEN & BLOOD TYPING

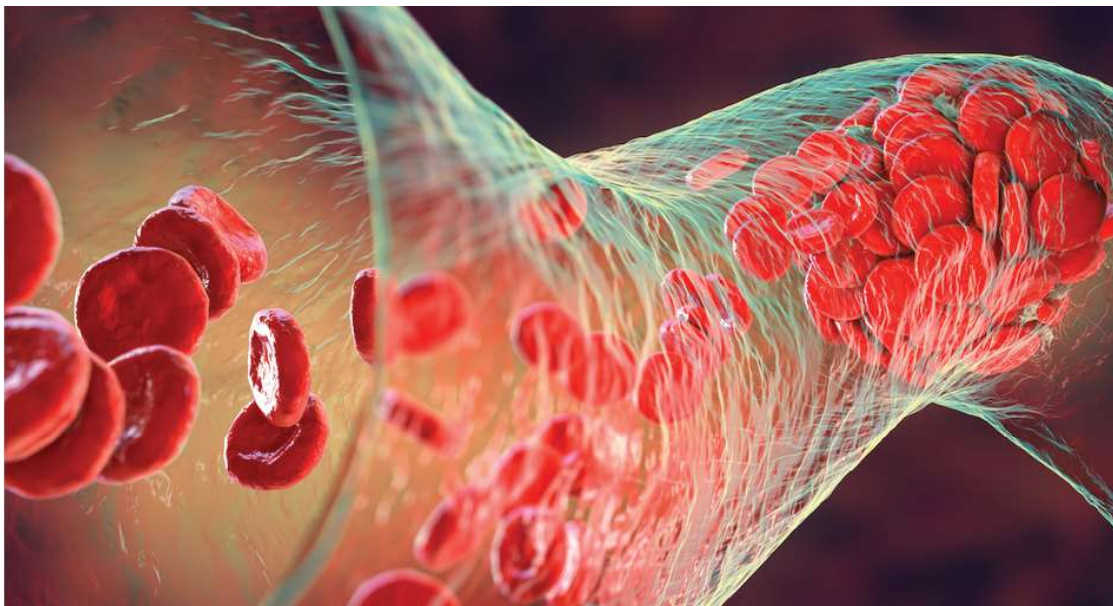
The Quickvet analyser provides analytical results in line with external laboratory analysers for PT, aPTT, fibrinogen and blood typing.

The state of the art 'Lab-on-a-Chip' analysis system profits from minimised manual intervention, increased speed of analysis, increased precision of data, significant cost reduction, less sample consumption and minimised operator exposure to hazardous material.

### The QuickVet Analyser

- Easy to use
- Accurate, reliable and cost effective
- Uses only 30µl of blood sample
- Tests results are easy to understand and are available in 2-4 minutes for coagulation, 14 mins for fibrinogen and 5 mins for blood typing.
- Available tests include:
  - Coagulation - PT/aPTT Combo Test
  - Equine Fibrinogen
  - Canine Blood Typing - Canine DEA 1.1 Test
  - Canine Fibrinogen
  - Feline Blood Typing

**Run 12 tests a month and the Quickvet is yours, FREE!**



# INSIGHT qLABS 3

## HAEMATOCRIT HCT AND TOTAL HAEMOGLOBIN



The QV3 requires only 1 drop (10µl) of whole blood directly from the syringe and provides excellent correlation to external laboratory results. The low-cost test strips which combine PT/aPTT on one strip, do not require refrigeration, which increases practicality for veterinary practices.

### Features

- Requires 1 drop (10µl) of non-anticoagulated whole blood
- PT/aPTT tested simultaneously on 1 test strip
- Low cost analyser and consumables
- Room temperature test strip storage
- Fill test strip directly from syringe
- QC material available
- No need to transfer sample into citrate tube
- Option for bluetooth docking station printer
- 'Test count up' for immediate assessment
- Excellent correlation to external laboratory results

### Simple Test Procedure

- Insert test strip
- Apply a drop of blood
- Results displayed on LCD screen

Calibrated and validated specifically for use in cats and dogs.

Cartridge Types:

PT/aPTT combo test strip (1 box = 12)

**Run 12 tests a month and the Qlabs is yours, FREE!**





# EPOC

## PORTABLE BLOOD GAS, ELECTROLYTE & CRITICAL CARE ANALYSER

**Affordable. Reliable. In-clinic.**  
**When you need answers FAST.**  
**The next generation of handheld veterinary critical care analysers**

The EPOC is the first wireless veterinary point of care testing solution to use smart card technology. It provides immediate blood gas, electrolyte and critical care biochemistry results and provides lower system and consumable costs than other leading portable critical care analysers.

### Perfect for Critical Care Centres

- The EPOC BGEM Test Card is a blood gas, electrolyte and metabolite panel consisting of the following:
- Measured analytes: pH, pCO<sub>2</sub>, pO<sub>2</sub>, Na<sup>+</sup>, K<sup>+</sup>, Cl<sup>-</sup>, Ca<sup>++</sup> (Ionised Calcium), Glu, Lac, Hct, Crea, Bun
- Calculated values: cTCO<sub>2</sub>, cHCO<sub>3</sub><sup>-</sup>, BE(ecf), BE(b), cSO<sub>2</sub>, cHgb, Anion Gap

### Features

- Room temperature storage of cards
- 100µl sample volume
- Integrated calibration & quality checks
- Can input all patient vitals, temp, BP etc.
- New parameters continually being developed
- Barcode smart cards for error free use
- Easy to use touch screen technology
- Results in 30 seconds
- Completely portable with rechargeable battery

**Run 25 tests a month and the EPOC is yours, FREE!**



BLOOD GAS



## VCHECK V200

### IMMUNOASSAY ANALYSER

VCheck V200 is a practical indicator for severity of illness, as the markers increase proportionally with the degree of inflammation and infection. The markers are not affected by stress, steroid drugs, NSAIDs, and antibiotics. It accurately diagnoses invisible inflammatory foci (arthritis), enterobrosia and inflammation/infection. Through continual measurement of CRP and SAA, it is possible to evaluate the efficacy of treatments and to conduct therapeutic diagnosis.

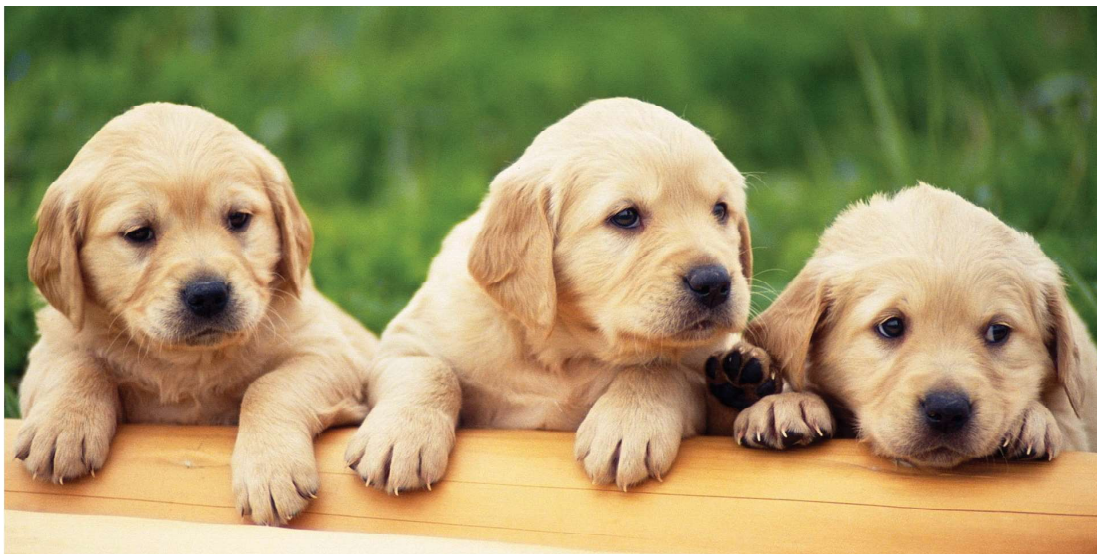
#### Features

- Fully quantitative automated results
- Accurate diagnosis for canines and felines in minutes
- Pancreatitis markers cPL and fPL
- Real time inflammation markers CRP and fSAA
- Analyser provides print out and result storage
- Reference lab quality avoiding test referrals

**Run 20 tests a month and the Vcheck is yours, FREE!**

#### Tests Available

- Canine CRP (C-Reactive Protein)
- Feline SAA (Serum Amyloid A)
- D-dimer
- Canine NT Pro-BNP
- Feline NT Pro-BNP
- cPL
- fPL
- Cortisol
- T4
- TSH
- SDMA
- Progesterone
- Antibody Titre



# INSIGHT URINALYSIS

## INSIGHT URINALYSIS READER

The InSight urinalysis Reader is a semi-automatic urine test strip reader with a touch screen & printer to be used in conjunction with InSight MS urine test strips. Simply dip the strip into the urine sample and place it on the strip loading plate. Results are displayed in 60 seconds. UPC ratio results in less than 2 minutes.

### InSight urinalysis Test Strips

- Quantitative test for the detection of proteinuria in animals
- Urine protein/creatinine ratio (UPC)
- Screens patients for the early signs of renal disease and monitor thereafter

MS-2 Urine Strips Test for:

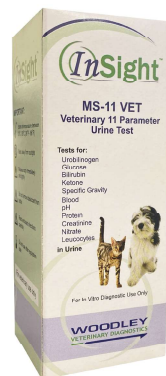
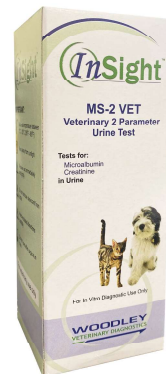
- Microalbumin
- Creatinine

with urine microalbumin/creatinine ratio

MS-11 Urine Strips Test for:

- Urobilinogen
- Glucose
- Bilirubin
- Ketone
- Specific Gravity
- Leucocytes
- Blood
- pH
- Protein
- Creatinine
- Nitrate

with urine protein/creatinine ratio



# TD400R

## MULTI PURPOSE CENTRIFUGE

A cost effective, high quality benchtop centrifuge tailored specifically for the Australian veterinary market.

The TD-400R has been designed inhouse by Vepalabs to provide our vets and nurses the best and easiest to use centrifuge for the most common point-of-care operations.

### Features of this product

- Dedicated, single-button operation for plasma/serum separation
- PCV/TP preparation and urinalysis
- 10,000rpm max speed, delivering excellent separation
- 10mm diameter wells for paediatric sample tubes & conical eppendorf tubes (up to 2mL in volume)
- Accepts 70mm capillary tubes for PCV/TP preparation
- Electronic braking
- Super quiet operation, perfect for compact laboratory spaces



# V5000 LED MICROSCOPE

## INNOVATING LED POWERED ILLUMINATION SYSTEM



### Precision. Clarity. Innovation.

The Vision V-5000 binocular microscope has an innovative LED powered illumination system that results in a white light instead of the yellow light produced by filament lamps. It is robust and has been developed for heavy use: it consists of high quality components which assure a high image contrast and excellent optical resolution. With a modern and ergonomic design, it is easy to handle and to transport.

### Features

- 50,000 hours LED light source life time (instead of 1,500 from a halogen lamp)
- 30° inclined head rotates 360°
- Wide-field eyepieces - 10x/18mm
- Adjustable interpupillary distance
- Dioptic compensation
- Revolving nose piece, quadruple, reversed
- DIN achromatic objectives 4x, 10x, 40x, 100x(60x objective available as an alternative or an addition)
- Double layer mechanical stage, 125 x 115mm with X-Y 70 x 30mm moving range
- Coaxial coarse and fine focusing
- LED illuminator with adjustable intensity
- N.A. 1.25 Abbe condenser with adjustable height and iris diaphragm
- Plano-concave mirror
- CE certified



# ANIGEN TESTS

SIMPLE. FAST. ACCURATE. COST-EFFECTIVE

The Anigen range of veterinary diagnostic kits for infectious disease of companion animals provide simple, fast, accurate and cost effective diagnosis in animal disease.

The Anigen companion and industrial animal testing products are designed to support veterinarians in their effort to manage the diseases and treatments of their patients.

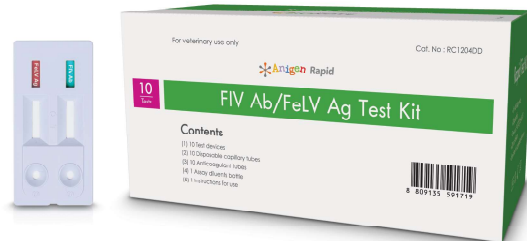
- Room temperature storage
- Easy to use
- Everything you need is in the box

## Available tests

- Heartworm Ag 2.0 (10)
- FeLV Ag (10)
- FIV Ab (10)
- Giardia Ag (10)
- CPV/CCV Ag (10)
- CPV/CCV/Giardia Ag (5)
- CPV Ab (titre test) (10)
- FeLV Ag/FIV Ab (10)

Please contact us to express interest in the following that are available but not included in stock:

- CDV Ab (titre test)
- FHW Ag
- Total IgE (atopic dermatitis and allergy indicator)



# BLOOD TUBES

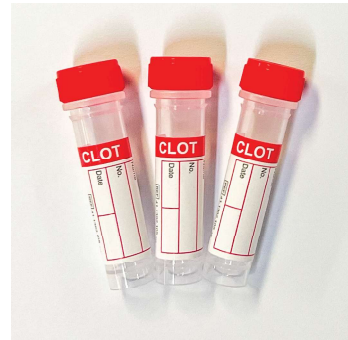
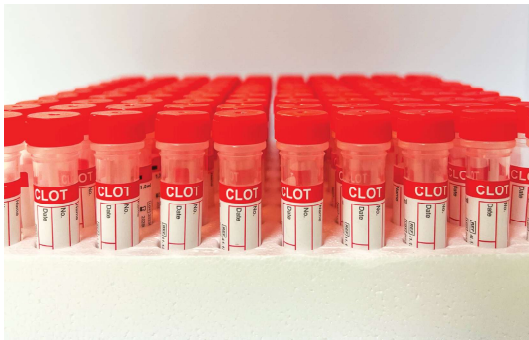
## MICRO COLLECT TUBES

Micro Collect offers a quick way to collect small blood samples for a wide range of analyses. The system is perfectly suited for patients with fragile veins, patients with limited time and coagulation issues.

Our micro collect tubes come in a convenient tray to keep organised and easy accessing.

With the option of EDTA, Lithium Heparin and Serum tubes all available in a 1.3ml volume collection tubes.

Micro collect tubes fit most veterinary centrifuges.



# LABORATORY INTEGRATION

## RESULTS, INTEGRATED & ACCESSIBLE FROM ANYWHERE

---

Vepalabs cloud based platform integrates results from multiple point of care analysers with a single click.

Create professional lab reports for your patient records and take home notes.

Access your results from anywhere, anytime via the internet.

A Veterinary industry first – Vepa can integrate results from various brands of analyser, you are not limited to a single brand anymore.

Yes - we'll happily integrate with competing analysers, because we believe your life should be simple.

- Windows PC
- All cabling and installation tools
- Life-time software license
- Unlimited users
- NO other costs!
- Combine results from multiple analysers
- Integrate multiple results for each patient
- Reduce space and wastage from printers
- Access results anywhere, anytime
- Provide peace of mind with off-site backups













For support call  
1300 837 252

Scan QR for website

